

## Life of Temporary Repairs

Good Practice Guide  
UKOPA/GPG/034

T. Rudd



# Good Practice Guide Overview

---

1. Introduction
2. Scope & Contents of GPG
3. What is temporary?
4. Repair Process
5. Examples of clamps
6. Questions?

# Introduction

---

- New GPG issued in 2022
- Development ongoing since 2021
  - Sub-group from PIWG formed to progress; particular thanks to Richard Price who took lead alongside Stephen Humphreys
- Developed in response to increasing regulator focus on ‘Temporary repairs’
  - Little relevant industry guidance included
  - How temporary is temporary?
  - How do you define the life?
- Operators are good at managing the life of their key pipeline assets, but potential gap identified in how we specify, install, log, maintain and ultimately remove temporary repairs
- Key takeaway – such repairs are not “Fit and forget”

# Scope & Contents of GPG

---

- Document is intended to be a high-level guide on how to manage the whole repair lifecycle
- Valid for both liquid and gas pipelines
  - Scope mainly targeted at >7 bar pipelines, but principles applicable below this
- Key topics covered:
  - Types of defect/failure anticipated
  - Definition of a temporary repair
  - Relevant legislation & guidance (PSR, HSE report 2001/038, ACOP and guidance to the Management of Health and Safety at Work Regulations 1999)
  - Methodology of specifying and installing repair
  - Repair lifecycle
  - Types/examples of temporary repair

# What is temporary?

---

- A repair that has a remaining life less than the remaining life of the pipeline due to one or more of the following:
  - The repair does not arrest the failure mode of the defect
  - The repair does not have the same pressure rating as the pipeline and requires a temporary reduction in pipeline operating pressure
  - The repair will degrade/lose strength over time (ageing)

## Repair Philosophy (per HSE publications)

- Replace like-for-like.
- Temporary repair until replacement can be carried out.
- Permanent repair where replacement is not practical.





UKOPA

United Kingdom  
Onshore Pipeline Operators' Association

# Temporary or permanent?

'Temp  
70mp  
intro

Installed in  
1999/2000, 5 year  
original design

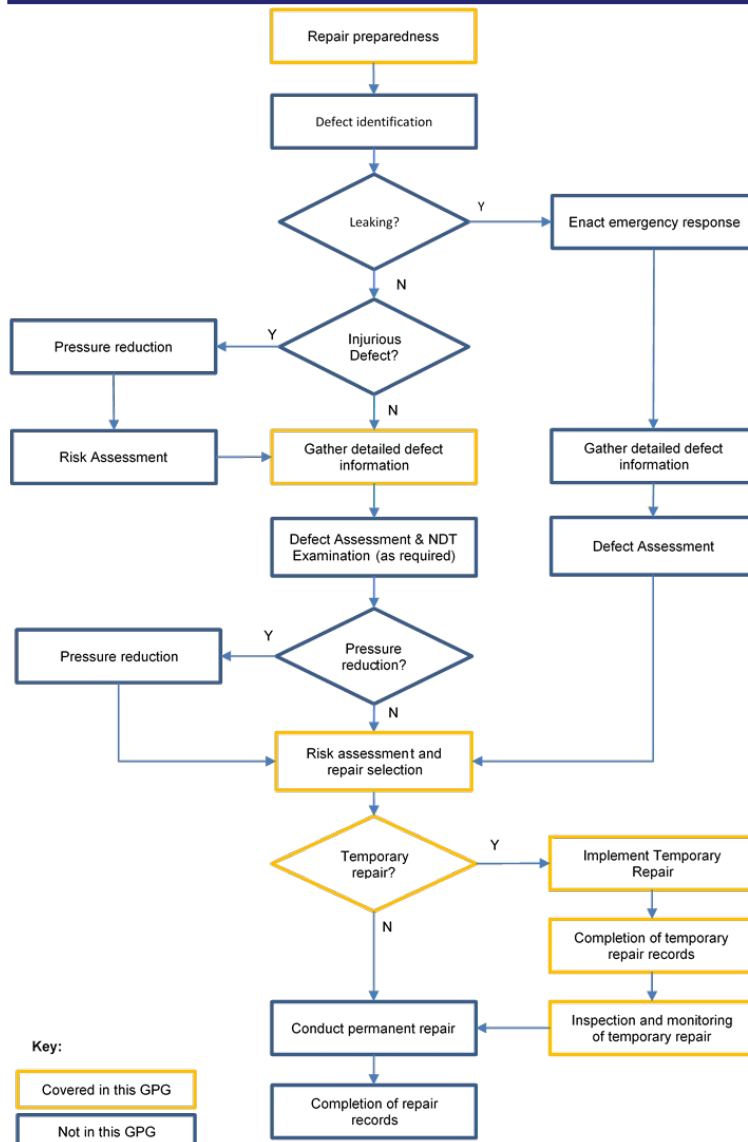


© findingtheuniverse.com

# Repair Process

## Records vital

- Risk Assessment to consider not only type of repair, but how to safely fit
- Consider MOC for repair fitment (to log assessment) and for any repair life extension
- Temporary Repairs Register vital to track repairs, inspection regime and remaining life
- Ensure you capture installation details and quality pack for repair





# Examples of repair types

---

## Composite Sleeve





# Examples of repair types

---

## Wet-lay composite



# Examples of repair types

---

## Welded Sleeve (Type-A or Type-B)



# Examples of repair types

---

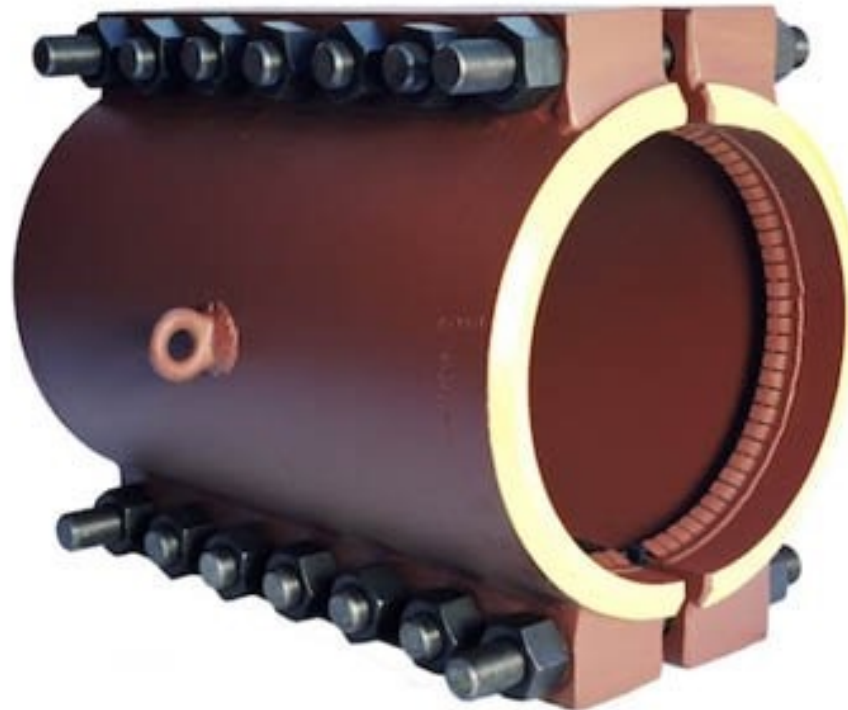
## Epoxy Shell Repair (ESR)



# Examples of repair types

---

## Bolted Clamp/Split Sleeve





# Examples of repair types

## Pressurised/Injected Structural Clamps



# Examples of repair types

---

## Wrap-around/leak seal/ “Waterboard” clamps



# Examples of repair types

---

## Pinhole Clamps



# Questions?

---

## Thank You

## Any Questions?